

Concept Design Presentation

LOFT107INTERIORS

47 Court, Miami Beach, FL 33140

doeArch



Architecture is a working platform based on the contemporary world habitat. It is characterized as much by it's proximity to architecture, interior design and urbanism as to the human sciences an unprecedented approach with regards to the majority of the professional practices related to architecture.

It is common practice for architects to define themselves as specialists in building projects: be they large or small, discrete or surprising, monumental or ephemeral. In contrast, at DooArchitecture, we like to think that our focus is derived from the practices, qualities, emotions of inhabiting, understanding any type of human activity as it relates to space and time. We will not photograph our projects prior to the arrival of it's inhabitants, on the contrary, our projects exist solely in their presence. We are deeply conscious of the political value of dwelling, residing, inhabiting.



**“There are people who transform the sun into a simple
yellow spot, but there are also who makes a simple
yellow spot the sun itself”**

Pablo Picasso



SUN PATH

Site Conditions

Scale N.T.S.

SUNSET



LOFT 107



Sunrise Lake View



SUNRISE

HIGH NOON





...BLURRING THE LINES BETWEEN INDOOR AND OUT...

Existing Site Conditions



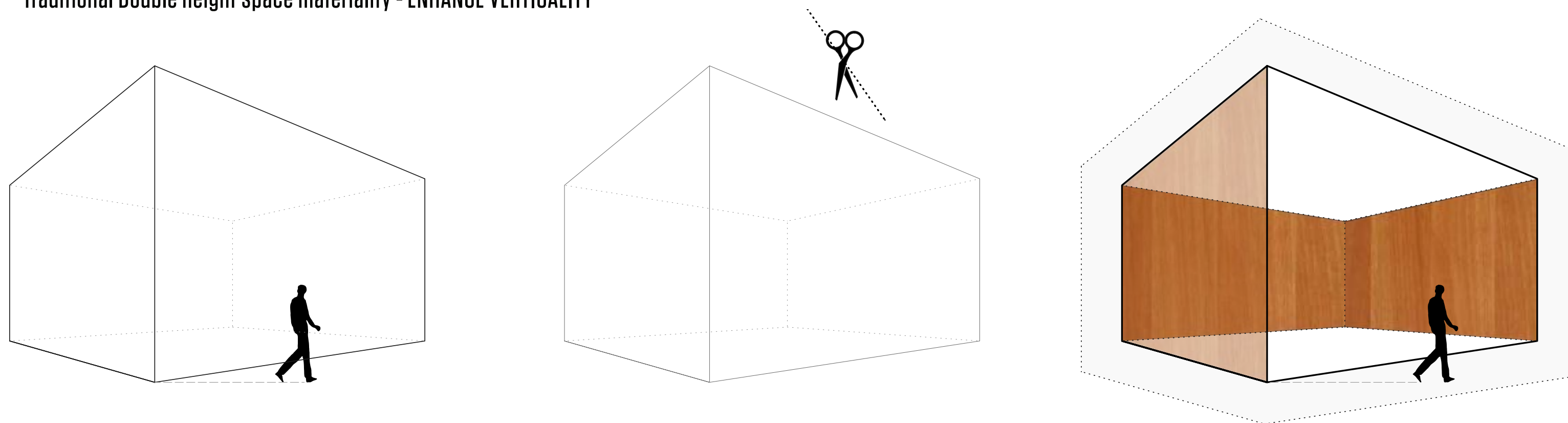


QUIET QUALITY

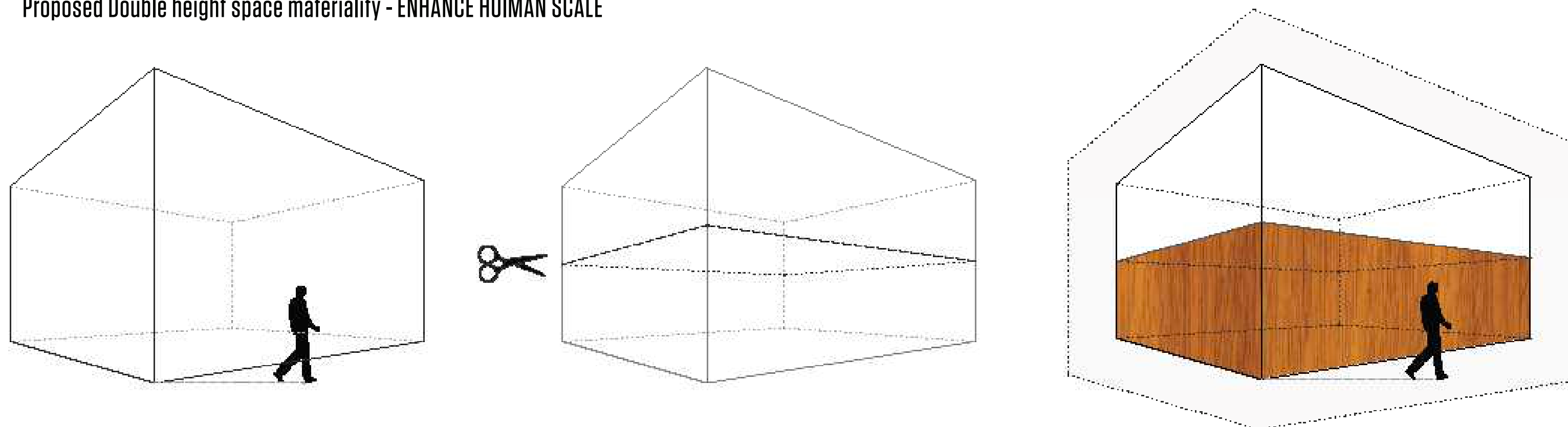
**If the architecture is any good, a person who looks and
listens will feel its good effects without noticing.**

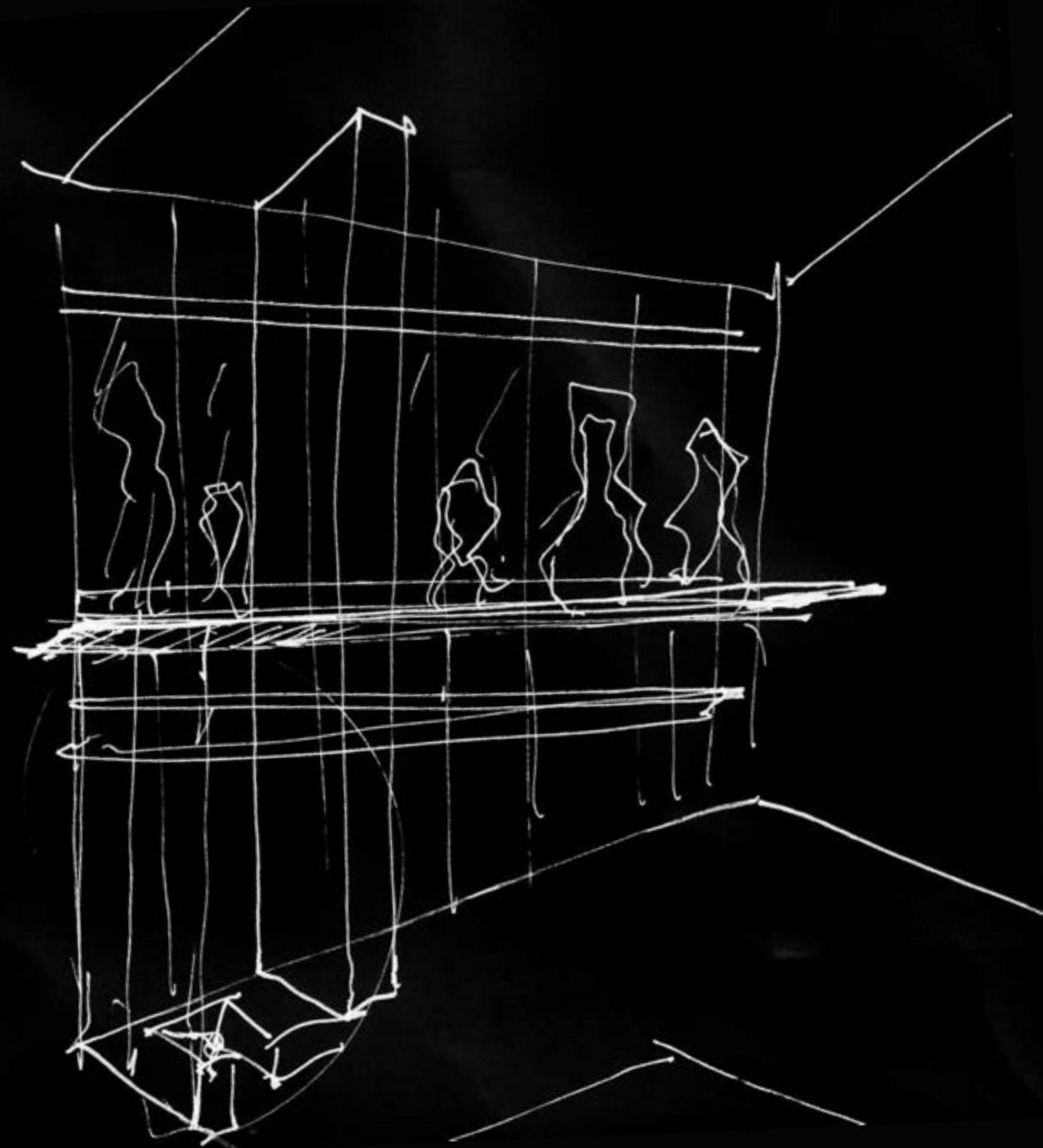
Carlo Scarpa

Traditional Double height space materiality - ENHANCE VERTICALITY



Proposed Double height space materiality - ENHANCE HUMAN SCALE



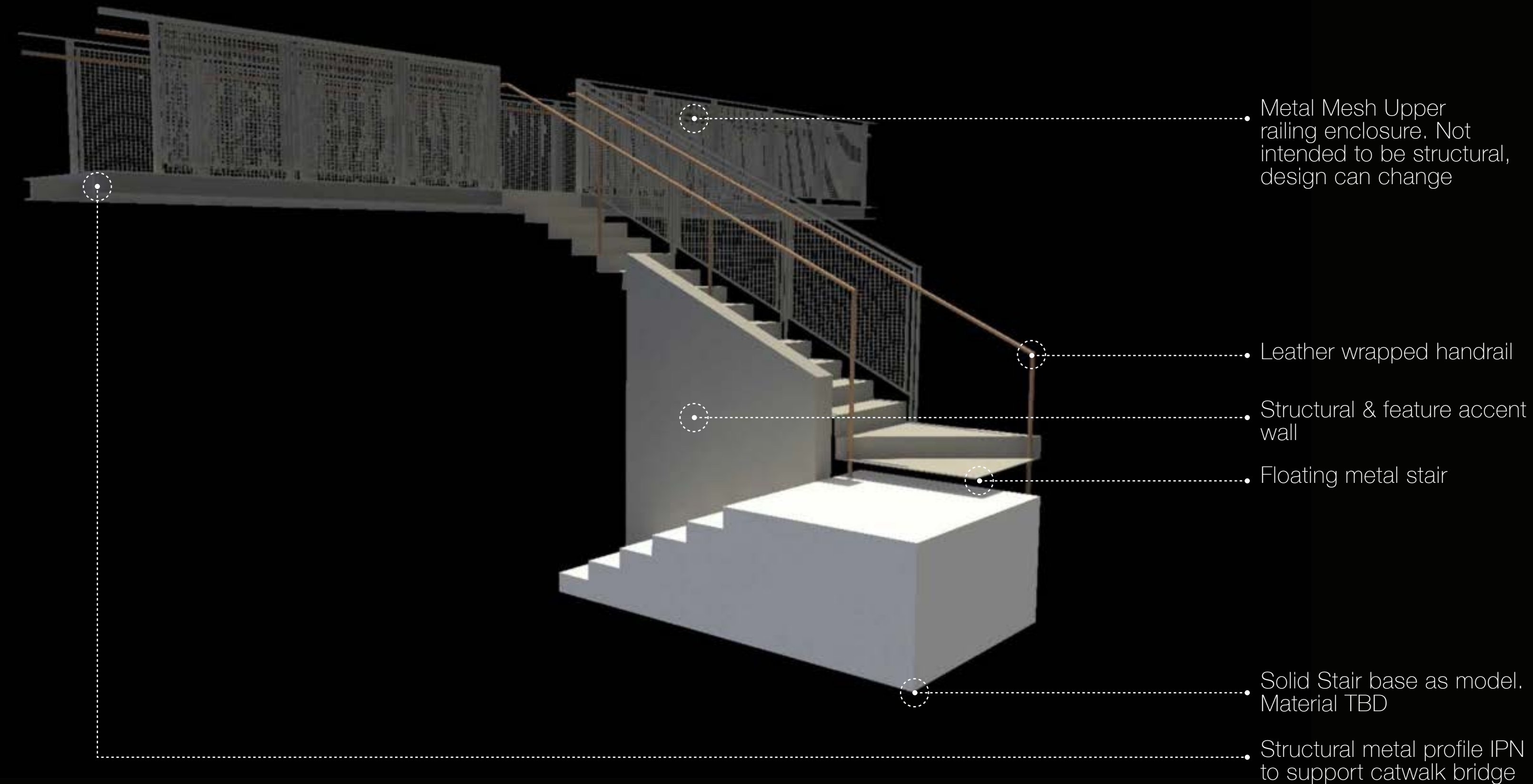


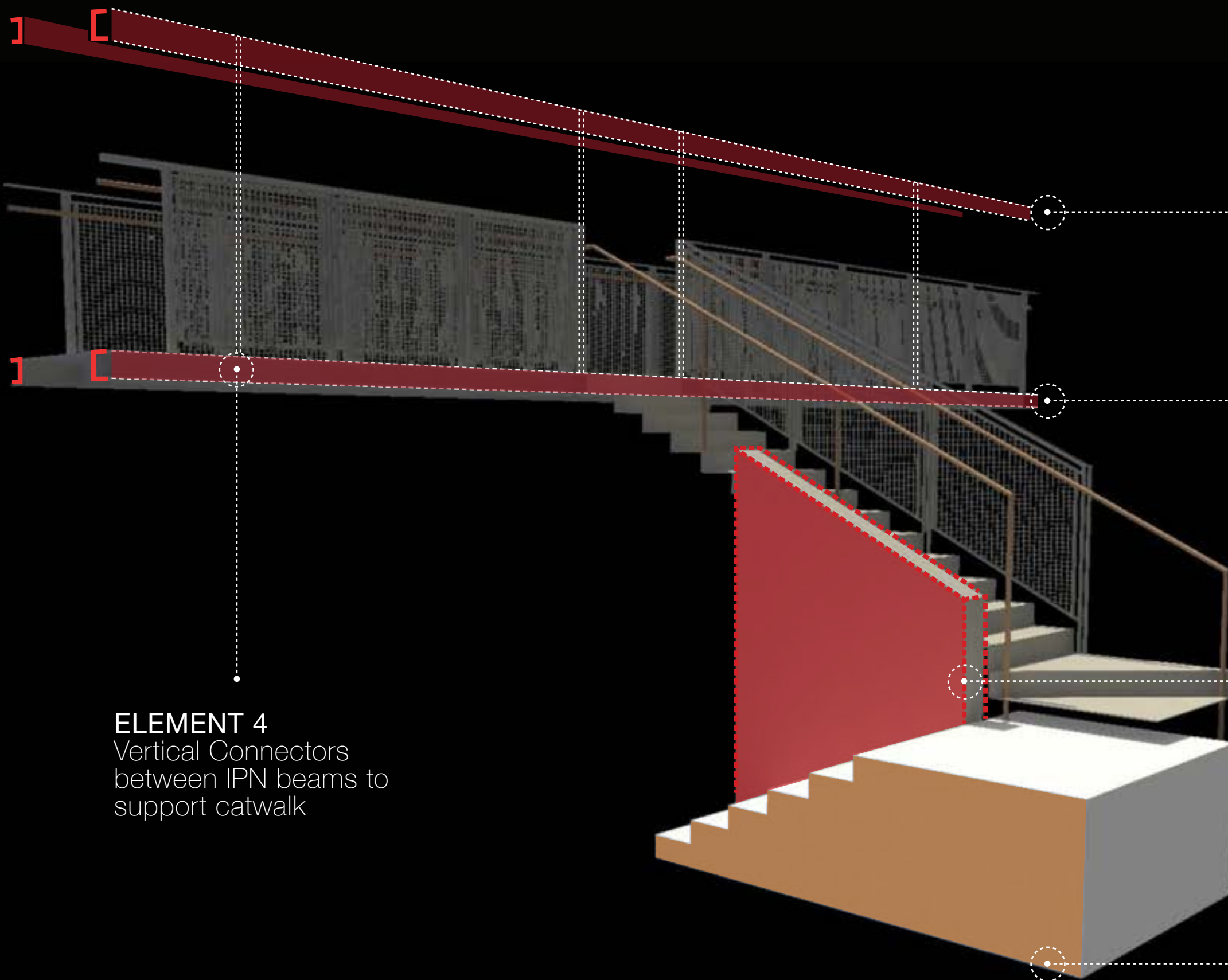
The image shows the interior of a modern house. The walls are curved and clad in light-colored wood panels. A central stone pillar with a square top stands in the middle. In the foreground, there is a wooden structure that looks like a staircase or a set of steps, also made of light-colored wood. The floor is a light, neutral color. The overall design is minimalist and emphasizes natural materials and organic forms.

**TWO MATERIALS DEFINE THE HOUSE
FURNITURE AND ART WILL MAKE IT LIVEBLE
BOTH OF THEM WILL DEFINE UNIQUENESS**

New Proposed Floor Plans







ELEMENT 4
Vertical Connectors
between IPN beams to
support catwalk

ELEMENT 1
Complementary IPN
inbeeded at the ceiling to
support the catwalk

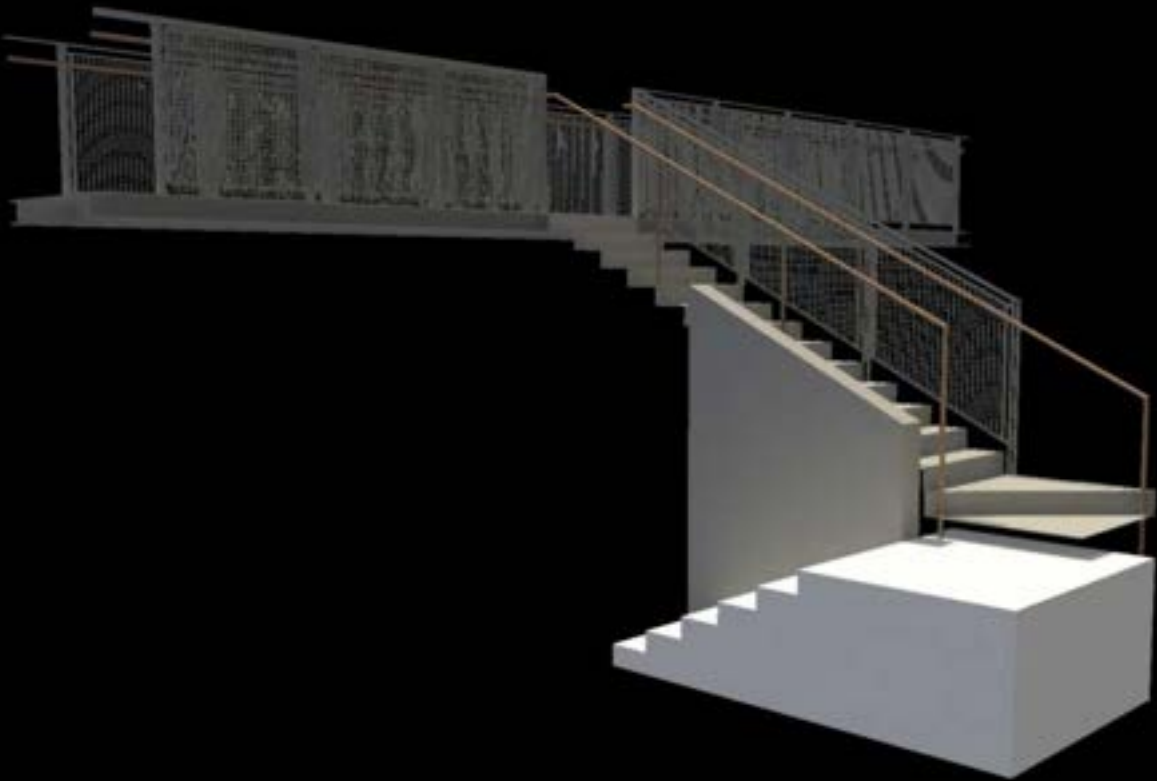
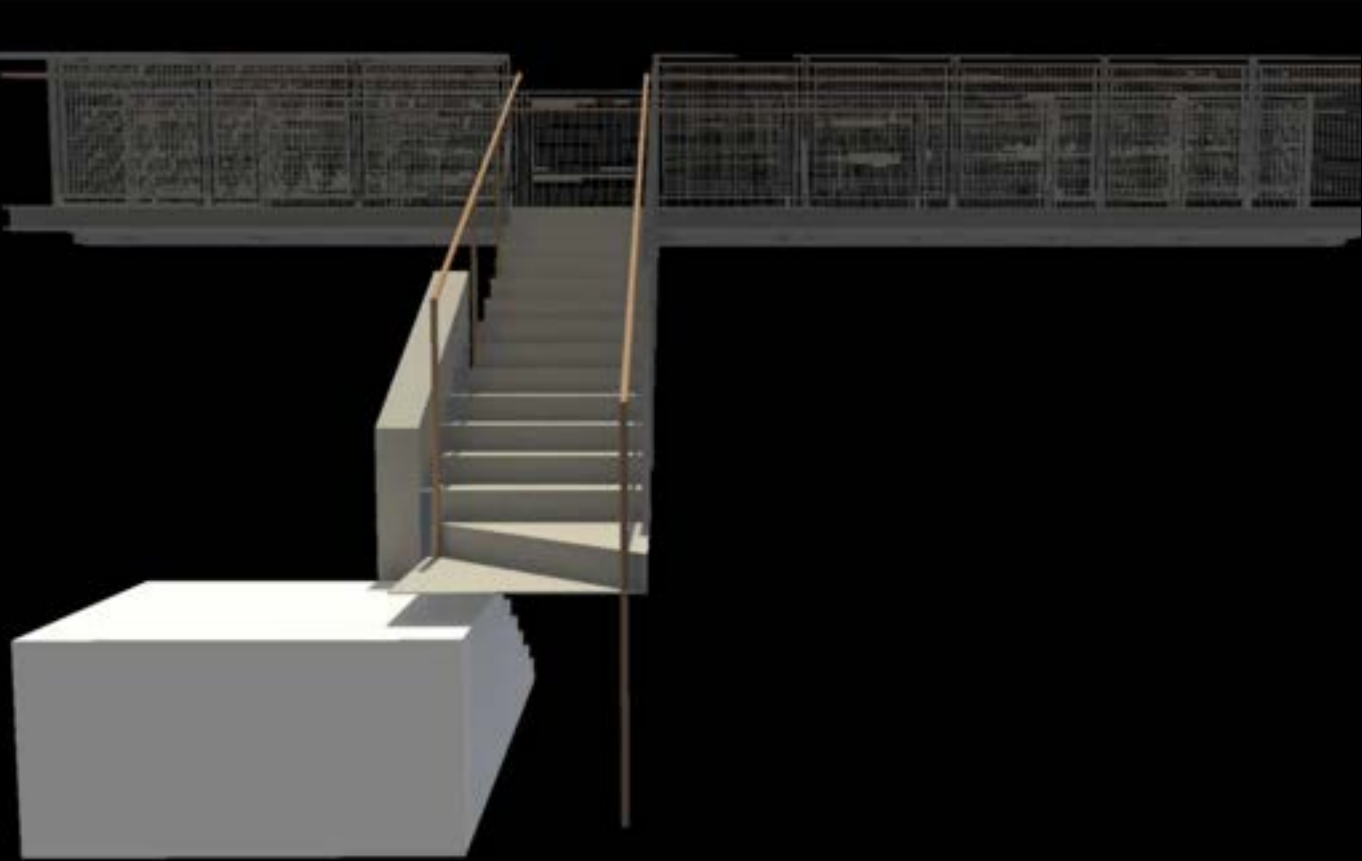
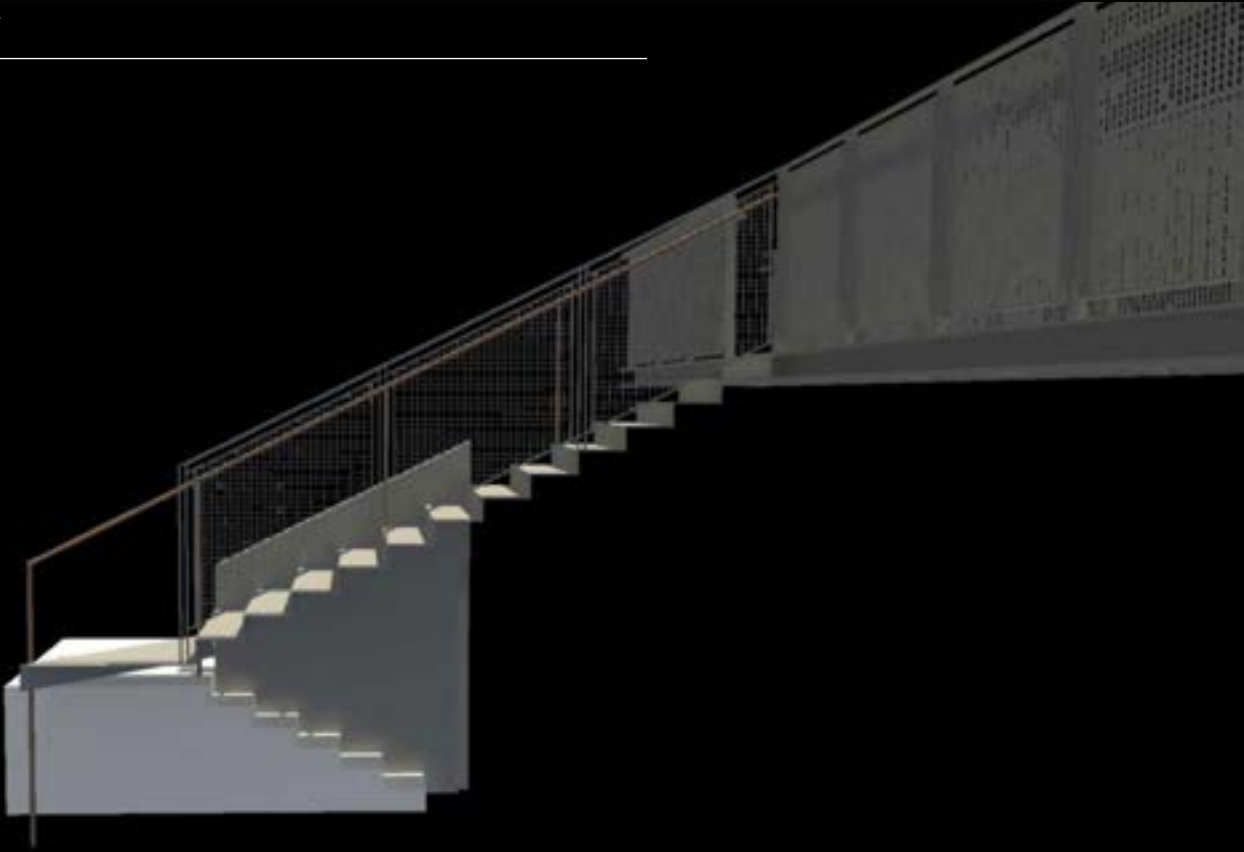
ELEMENT 1
Bridge structure with to IPN
beams in each side that
will create a truss structure
as the floor to liberate the
railing supports

ELEMENT 2
Structural Solid wall
from ground up that will
support the metal stair
while coming down and
will provide stability to the
catwalk. It will act as a
column

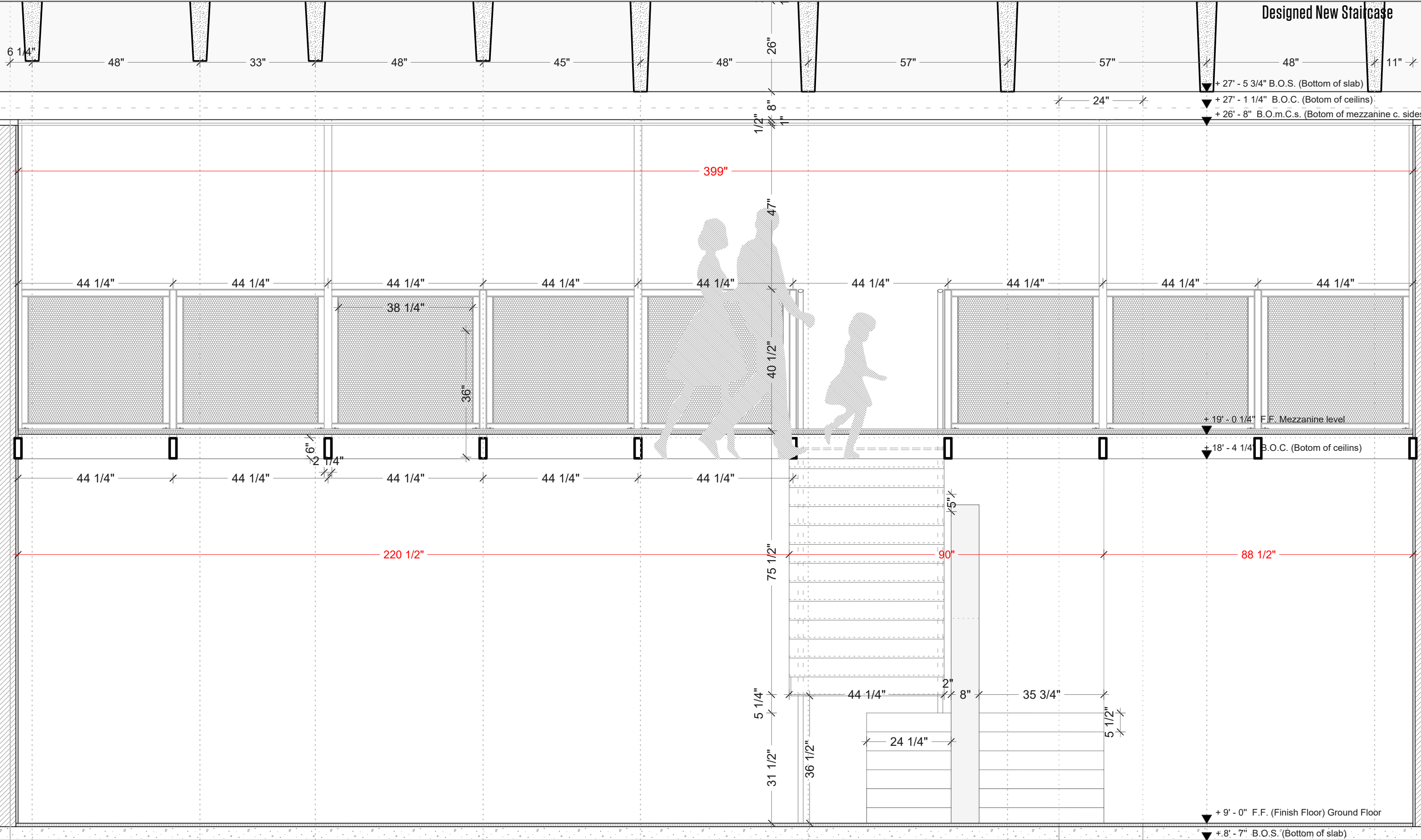
ELEMENT 3
Solid first section
supported at the floor and
independent from the rest
of the stair

Volumetric Study

New Stair Design

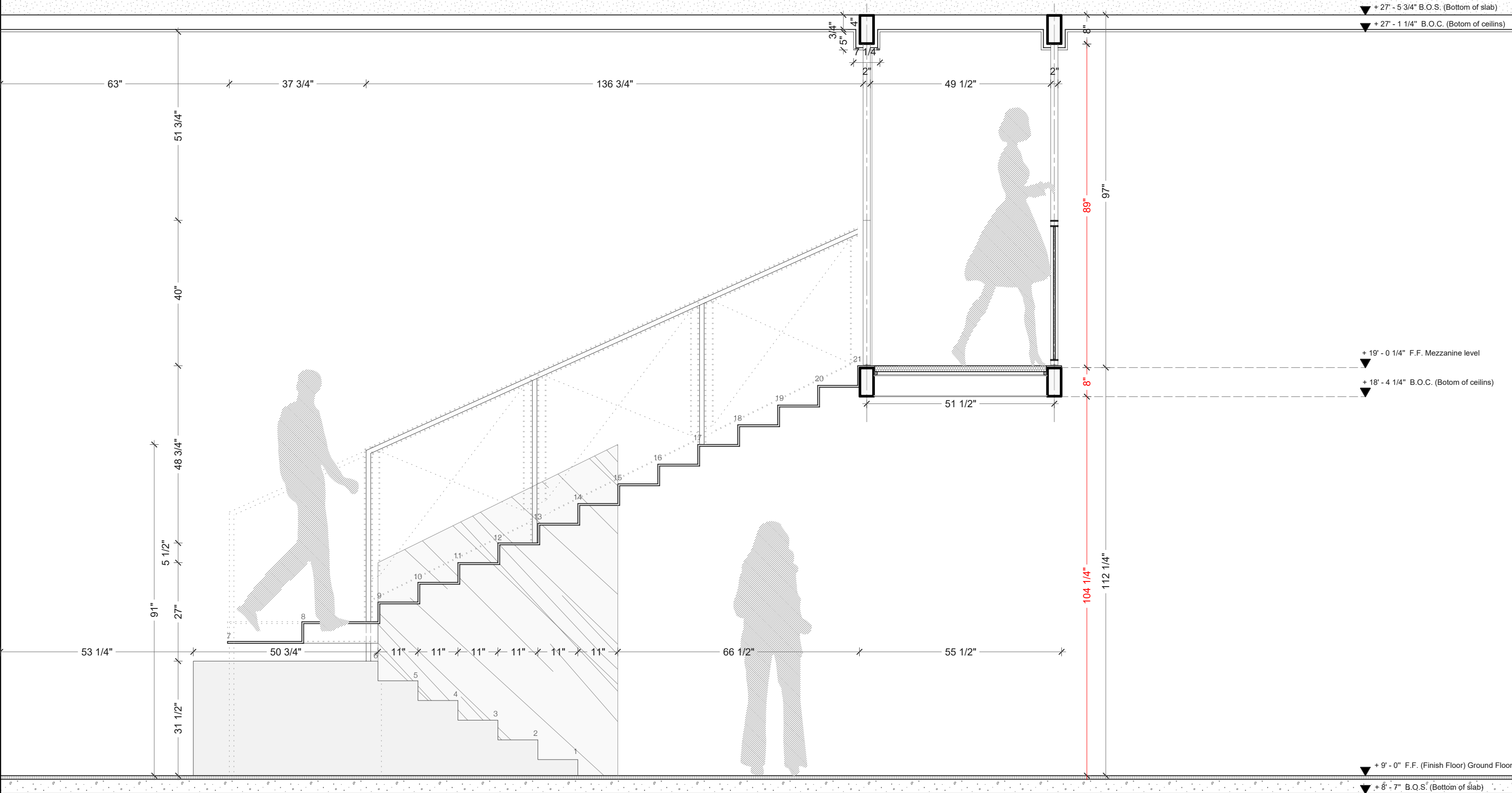


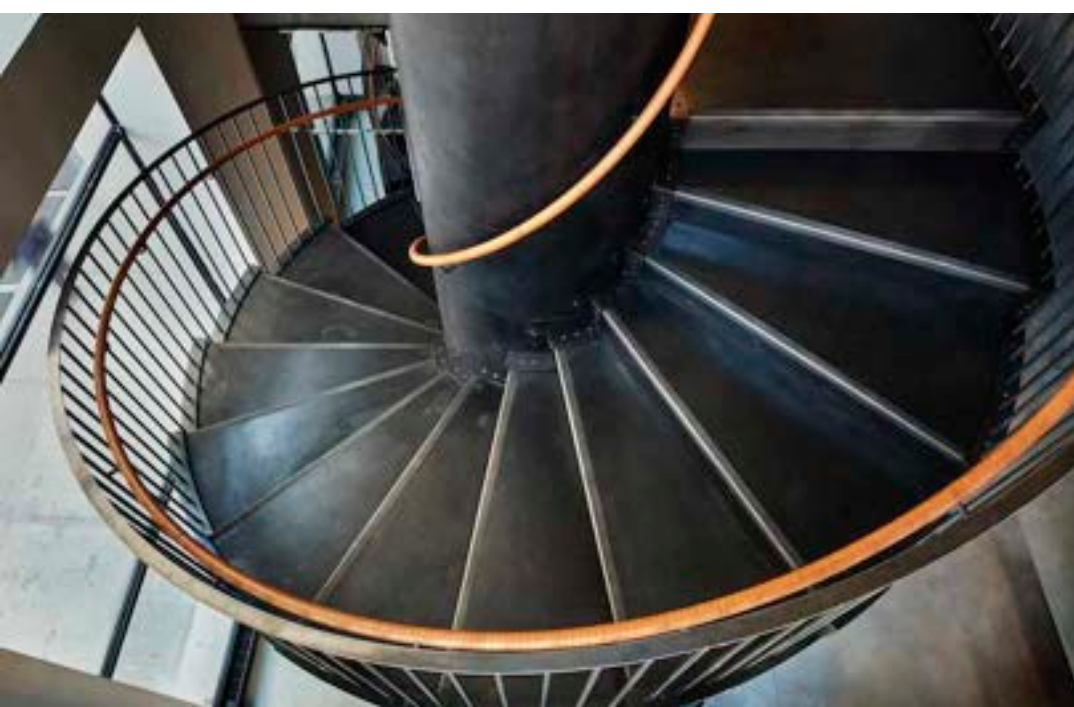
STAIR STRUCTURAL PLANS
Designed New Staircase



STAIR STRUCTURAL PLANS

Designed New Staircase

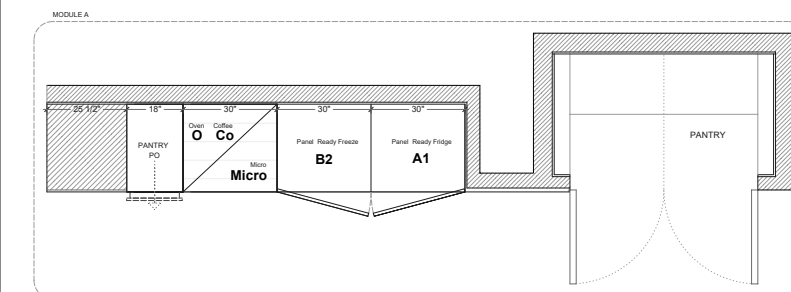
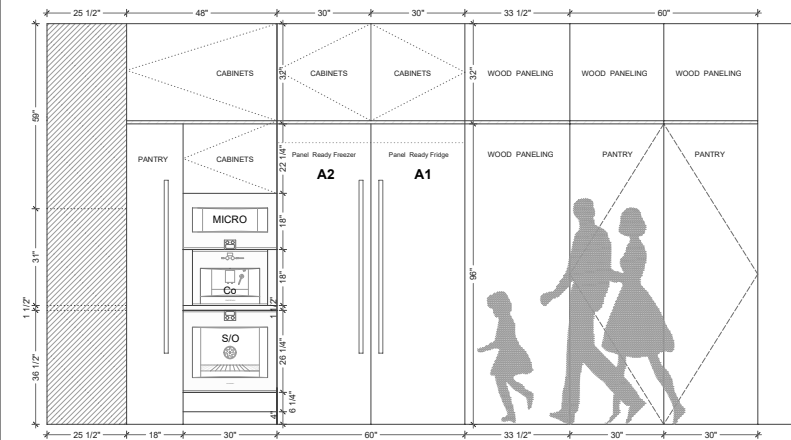




Concept references
(no material or scale ref)

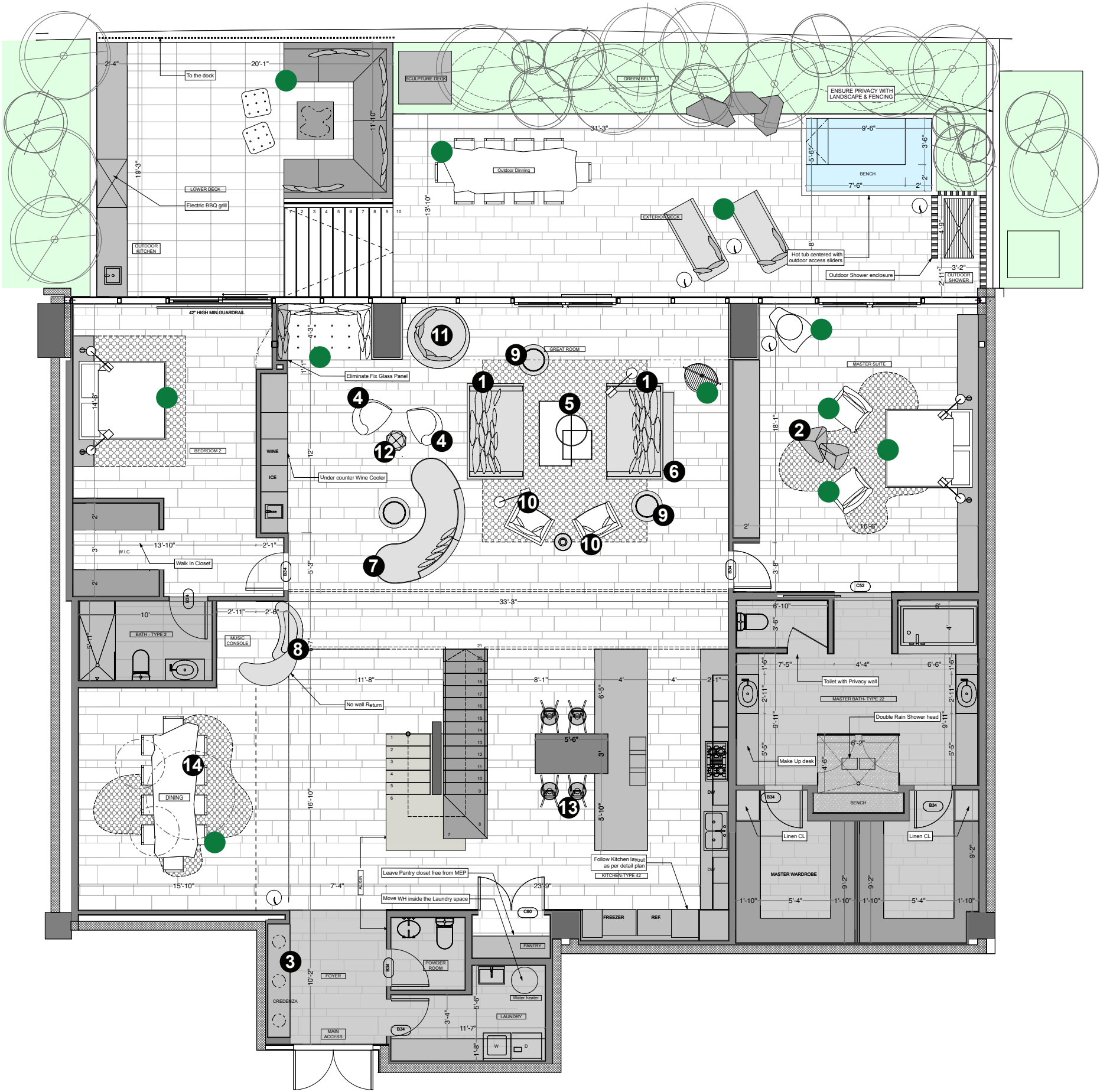


Final Approved layout

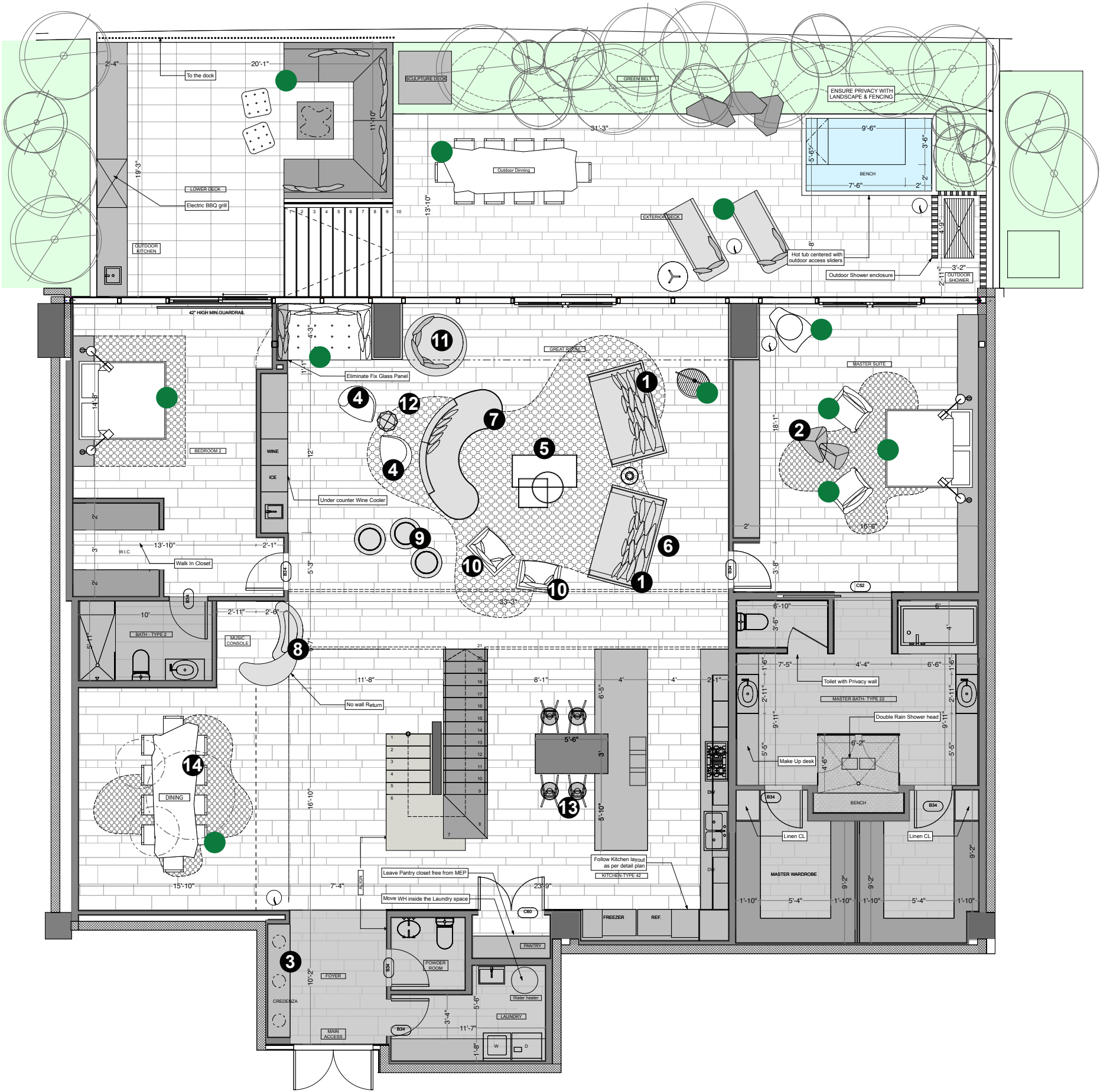


LE	Nº	DEFINITION	NUMBER	SIZE	INCLUDED	UPGRADE
A1	1	Column Fridge	RC472701	30"		
B1	1	Column Freezer	RF471701	30"		
C	1	Cooktop	VG491210CA	36"		
TY	2	Teppan Yaki	VP414610	15"		
ST	1	Steamer	VK414610	15"		
Mic	1	Microwave	BM281710	30"		
S/O	1	Steamer/Oven	BS471611	30"		
Co	1	Coffee Machine	CM210710	24"		
T	1	Trash		33"		
H	2	Downdraft Ventilation	VL414110	3"		
BH	1	Built in Hood				
CO	1	Convection Oven (bellow island)	BO480611	30"		
P	1	Countertop Sink		36"		
DW	2	Dishwasher	DF281760	24"		
Wc	1	Wine Cooler	RW404761	24"		
PO		Pull Out Pantry				
Dra		Drawers		30"		
Cab		Cabinets		30"		

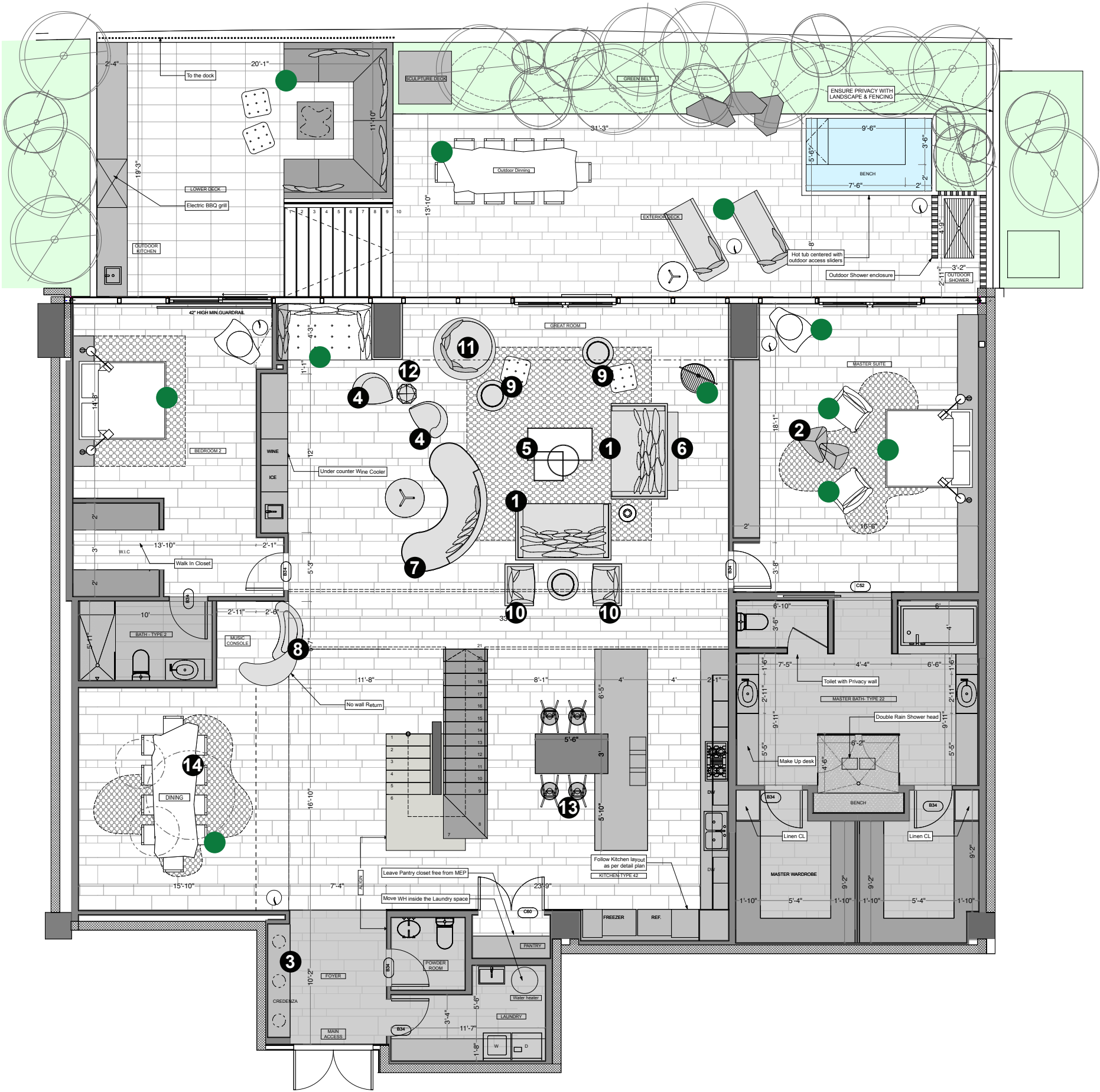








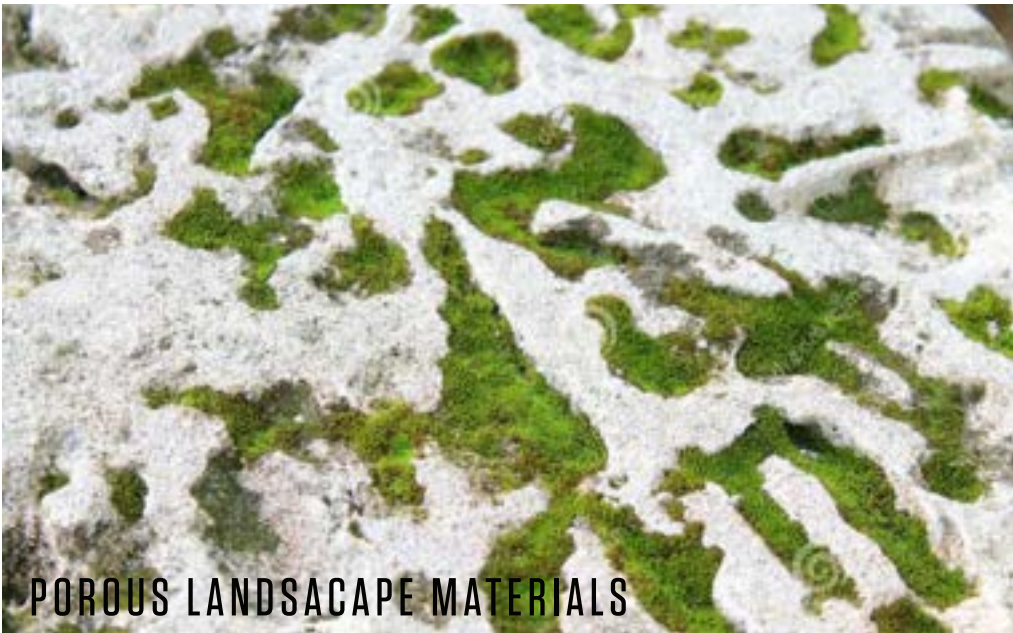








MATERIALS





Selected Works



Stair Design Presentation

LOFT**107**INTERIORS

47 Court, Miami Beach, FL 33140