

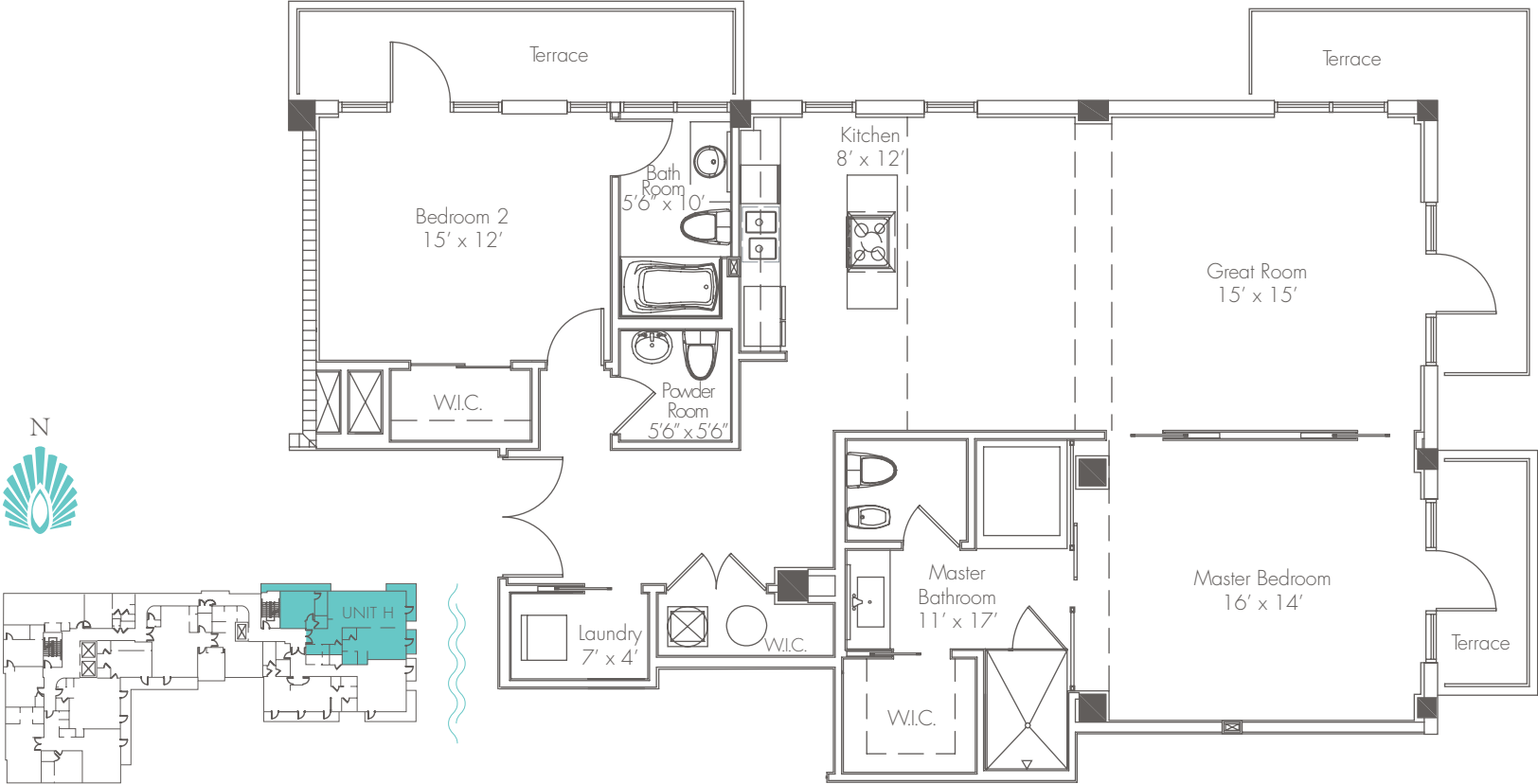


C A L Y P S O  
B Y C A R I B B E A N

Floor Plans

NORTH TOWER  
Unit H

2 Bedroom | 2.5 Baths  
AC 1,655 Square Feet  
Terrace 310 Square Feet  
Total 1,965 Square Feet  
183 Square Meters



## A Designer Collection of Supremely Luxurious Oceanfront Residences

The tranquil shade of an infinite ocean. The private serenity of a tropical lifestyle. This is Calypso — a designer collection of supremely luxurious oceanfront residences at Caribbean. Discover the true essence of Miami Beach living, where classic refinement melds with modern amenities for an experience of timeless sophistication.



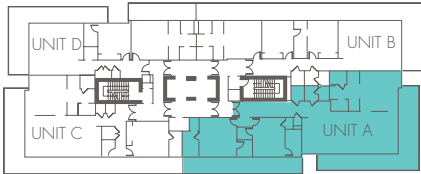
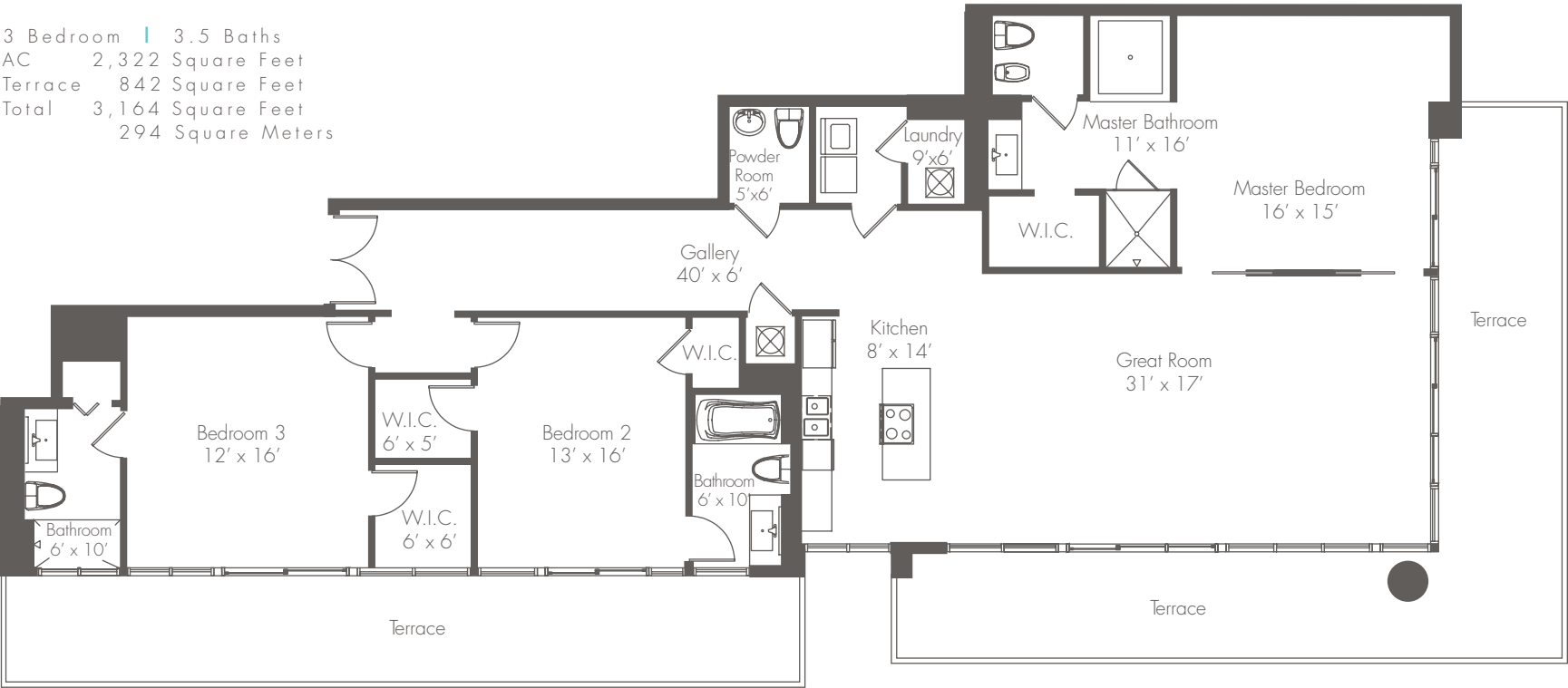
## Building Features & Amenities

- Designed by acclaimed Miami architect Kobi Karp
- Interiors by world-renowned designer Christopher Ciccone
- The multilevel pool deck features lush tropical landscaping
- Direct ocean access
- Chaise lounge seating, sumptuous daybeds and private cabanas
- Award-winning heated, infinity-edge pool & water lounge
- Oversized whirlpool spa
- Shaded meditation areas
- Alfresco picnic areas
- Towel service for both pool and beach
- 24-hour concierge & security
- Walk-in cigar humidor with secure storage for each residence
- Wine vault with tasting area and secure storage for each residence
- High-speed elevators
- Billiard lounge
- Fitness center with state-of-the-art exercise equipment
- Fully equipped business center in each building
- Bicycle storage & owner's storage area
- Award-winning water features and ample green areas
- Beautifully landscaped courtyards
- Impact-resistant glass throughout
- Secure, covered parking with 24-hour valet

Prices, Features and Specifications subject to change without notice. The developer makes no representations or warranties regarding the actual size and dimensions of the units in this brochure and no party may rely upon the same determining whether to purchase a unit and the purchase price of the unit. The survey of the actual units and provisions of the declaration of condominium shall control in determining the boundaries and actual dimension of units. Rendering is artist conception.

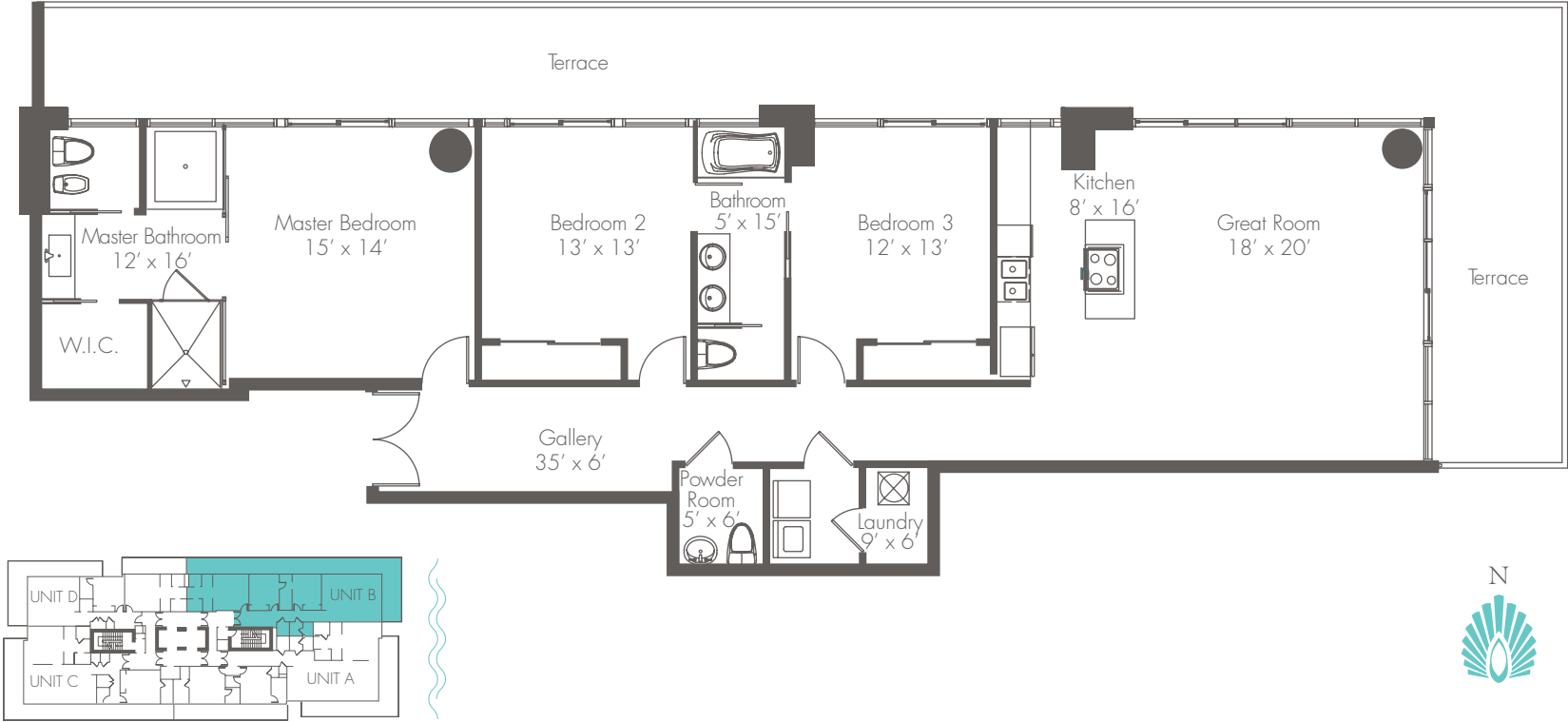
SOUTH TOWER  
Unit A

3 Bedroom | 3.5 Baths  
AC 2,322 Square Feet  
Terrace 842 Square Feet  
Total 3,164 Square Feet  
294 Square Meters



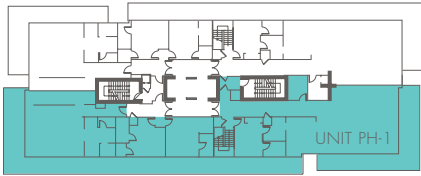
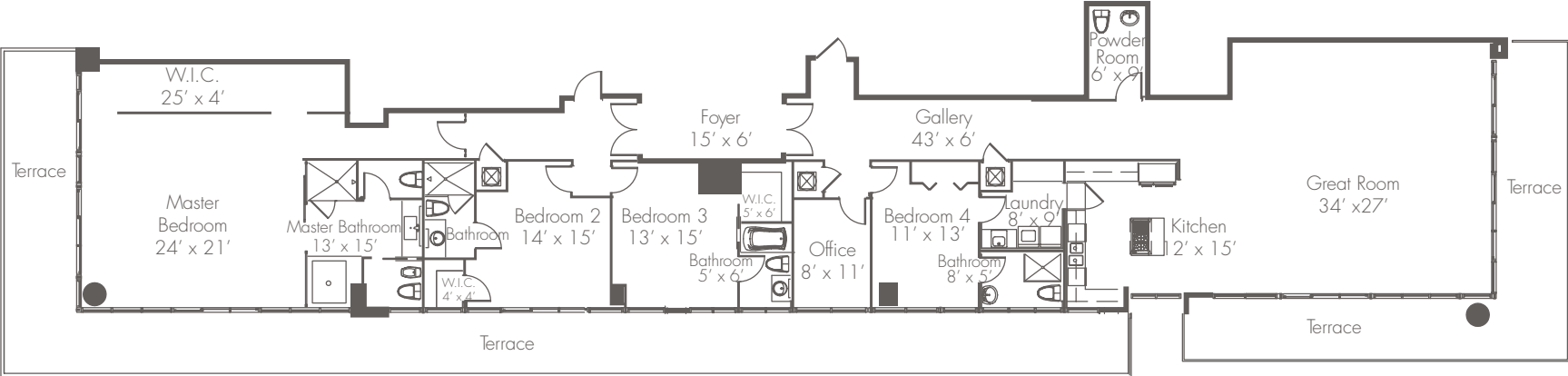
SOUTH TOWER  
Unit B

3 Bedroom | 2.5 Baths  
AC 1,837 Square Feet  
Terrace 782 Square Feet  
Total 2,619 Square Feet  
243 Square Meters



SOUTH TOWER  
Unit Penthouse 1

4 Bedroom + Den | 4.5 Baths  
AC 3,906 Square Feet  
Terrace 1,619 Square Feet  
Total 5,525 Square Feet  
513 Square Meters



## Residence Features

### INTERIORS

- Reinforced concrete floors, decorator ready
- 9'+ ceilings
- Floor-to-ceiling impact glass windows
- Wireless touchpad panels
- Pre-wired for electric, cable, high-speed Internet
- Individual high-efficiency water heaters and A/C
- Generous walk-in closets
- Fire protection sprinkler system throughout

### KITCHEN

- Salvarani Italian kitchens
- Stone countertops with stainless steel undermount sink by Kohler™
- Integrated Sub-Zero™ refrigerator/freezer (extra-wide model in penthouse units)
- Miele™ gas cook top with safe, pinpoint control
- Miele™ convection wall oven with touchpad control, metric conversion and multilingual display
- Miele™ ventilation hood with halogen lighting and multiple fan speeds
- Ultra-quiet, fully integrated Miele™ dishwasher offers large capacity and no-show controls
- Convenient Miele™ built-in coffee system
- SubZero™ undercounter wine storage
- Dacor™ microwave with interactive touch controls
- Laundry room with ultra-quiet Asko™ washer & dryer

### BATHROOM

#### Master Bath:

- Contemporary classic vanities by Salvarani
- Stone vanity tops with semi-encased sinks and coordinating 18-inch tile on floors and walls
- Seamless, floor-to-ceiling glass enclosures
- Elongated Duravit™ water closet and complementary bidet
- Extra-large, 20-jet therapeutic air bath, surrounded in stone tile with dramatic ceiling waterspout
- Walk-in rain shower with body jets
- Individual high capacity hot water heater

#### Guest Bath/Powder Room:

- Kohler™ Hourglass tub
- Coordinating Duravit™ water closets
- Vanity with stylish, semi-encased sink (guest bath only)
- Attractive pedestal sink (powder room only)



**CHRISTA**  
DEVELOPMENT



ARCHITECTURE  
INTERIOR DESIGN  
PLANNING



**BLUEROCK**  
REAL ESTATE

**FORTUNE**  
International Realty

3737 Collins Avenue, Miami Beach FL 33140