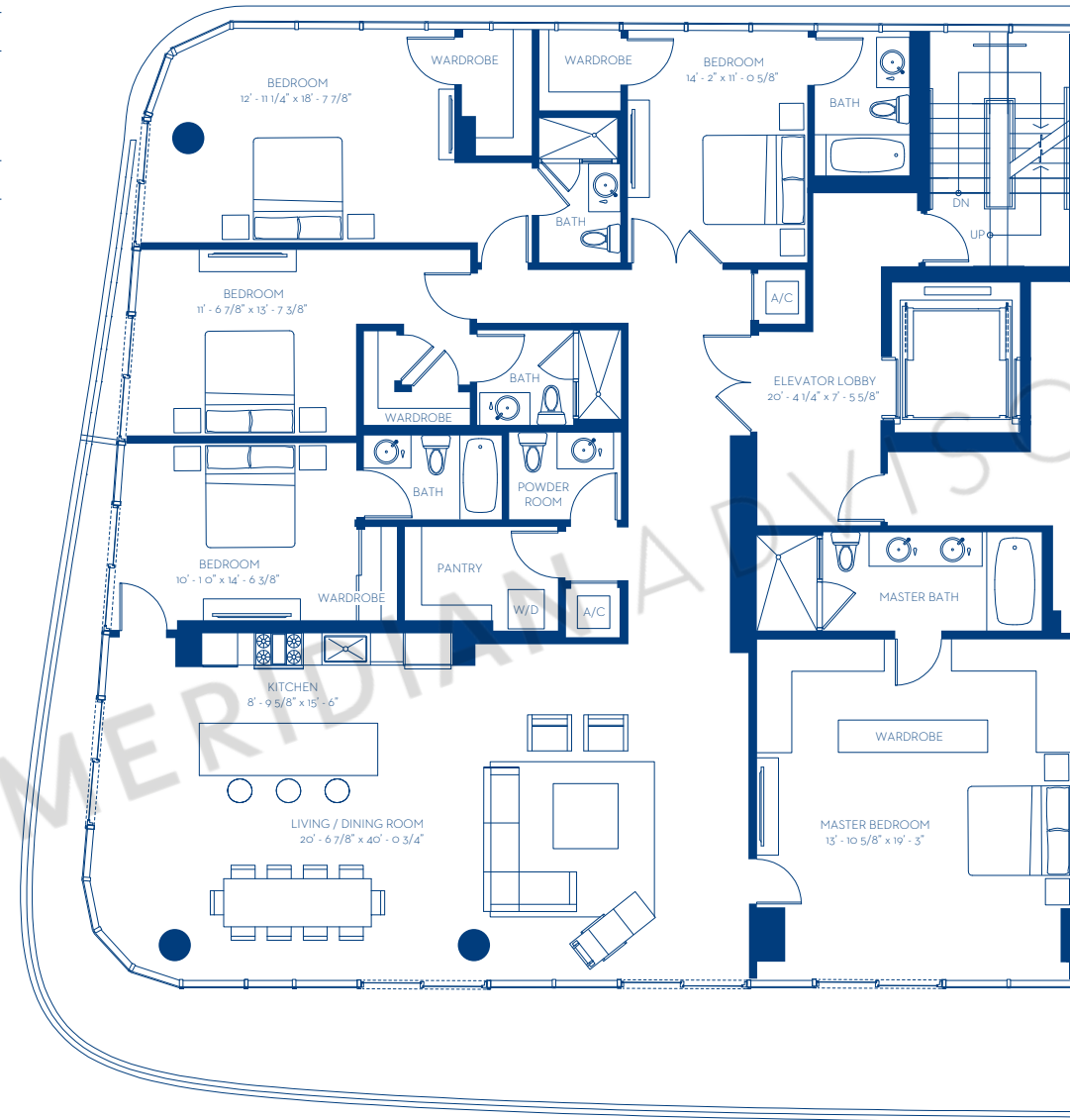


# UNIT PH07

ONE  
OCEAN

*Level 7 / North Building*

Residence	3,206 sq ft / 298 sq m
Terrace	624 sq ft / 58 sq m
Rooftop	2,448 sq ft / 227 sq m
<b>Total</b>	<b>6,278 sq ft / 583 sq m</b>



MERIDIAN ADVISORS



N >

**RELATED**



Stated dimensions are measured to exterior boundaries of the exterior walls and the centerline of interior demising walls and in fact vary from the dimensions that would be determined by using the description and definition of the "Unit" set forth in the Declaration (which generally only includes the interior airspace between the perimeter walls and excludes interior structural components). For your reference, the area of the Unit, determined in accordance with those defined unit boundaries, is 3,002 sq ft. Note that measurements of rooms set forth on this floor plan are generally taken at the greatest points of each given room (as if the room were a perfect rectangle), without regard for any cutouts. Accordingly, the area of the actual room will typically be smaller than the product obtained by multiplying the stated length times width. All dimensions are approximate and may vary with actual construction, and all the floor plans and development plans are subject to change.

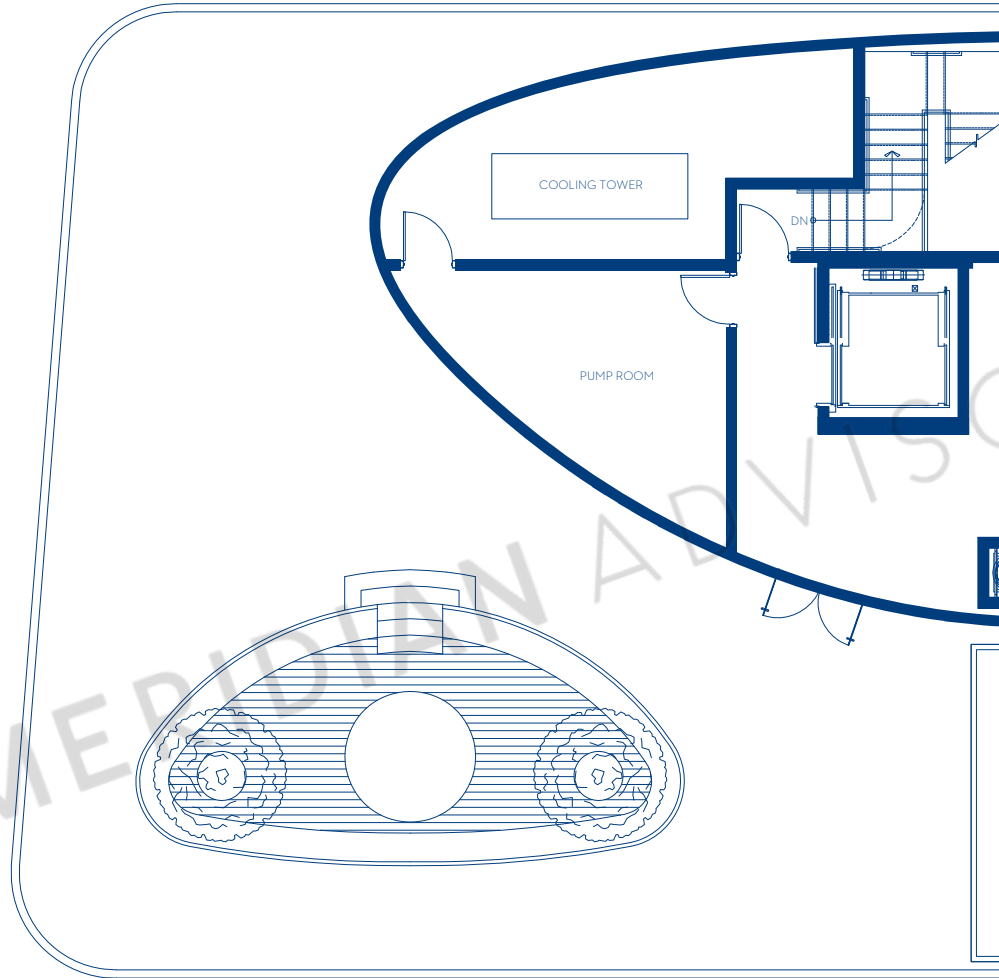
# UNIT PH07

Level 8 / North Building / Rooftop Terrace

Rooftop 2,448 sq ft / 227 sq m

Total 2,448 sq ft / 227 sq m

ONE  
OCEAN



MEDICIAN ADVISORS



 RELATED



Stated dimensions are measured to exterior boundaries of the exterior walls and the centerline of interior demising walls and in fact vary from the dimensions that would be determined by using the description and definition of the "Unit" set forth in the Declaration (which generally only includes the interior airspace between the perimeter walls and excludes interior structural components). For your reference, the area of the Unit, determined in accordance with those defined unit boundaries, is 3,002 sq ft. Note that measurements of rooms set forth on this floor plan are generally taken at the greatest points of each given room (as if the room were a perfect rectangle), without regard for any cutouts. Accordingly, the area of the actual room will typically be smaller than the product obtained by multiplying the stated length times width. All dimensions are approximate and may vary with actual construction, and all the floor plans and development plans are subject to change.