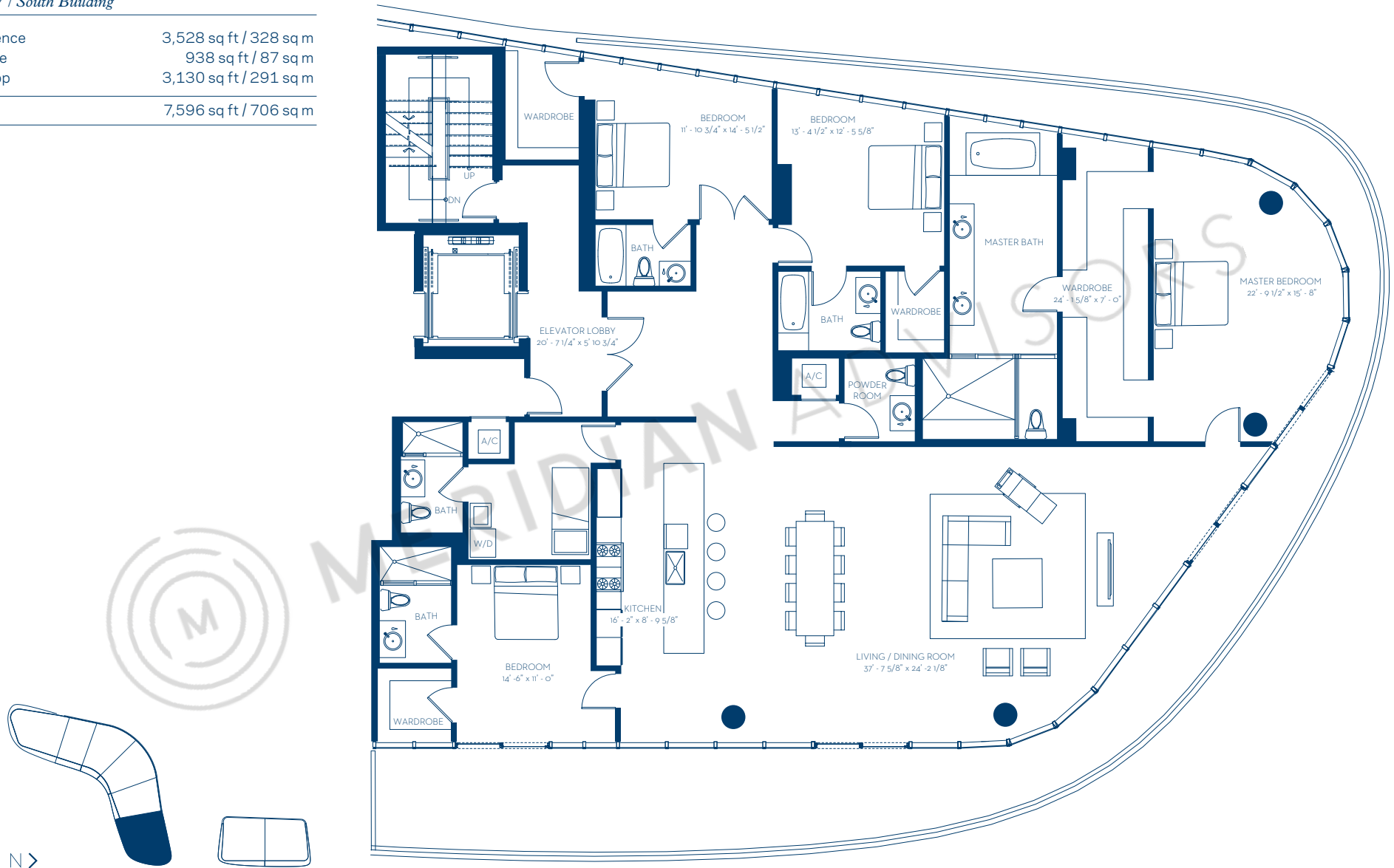


# UNIT PH06

ONE  
OCEAN

Level 7 / South Building

Residence	3,528 sq ft / 328 sq m
Terrace	938 sq ft / 87 sq m
Rooftop	3,130 sq ft / 291 sq m
<b>Total</b>	<b>7,596 sq ft / 706 sq m</b>



Stated dimensions are measured to exterior boundaries of the exterior walls and the centerline of interior demising walls and in fact vary from the dimensions that would be determined by using the description and definition of the "Unit" set forth in the Declaration (which generally only includes the interior airspace between the perimeter walls and excludes interior structural components). For your reference, the area of the Unit, determined in accordance with those defined unit boundaries, is 3,316 sq ft. Note that measurements of rooms set forth on this floor plan are generally taken at the greatest points of each given room (as if the room were a perfect rectangle), without regard for any cutouts. Accordingly, the area of the actual room will typically be smaller than the product obtained by multiplying the stated length times width. All dimensions are approximate and may vary with actual construction, and all the floor plans and development plans are subject to change.



# UNIT PH06

Level 8 / South Building / Rooftop Terrace

Rooftop 3,130 sq ft / 291 sq m

Total 3,130 sq ft / 291 sq m

