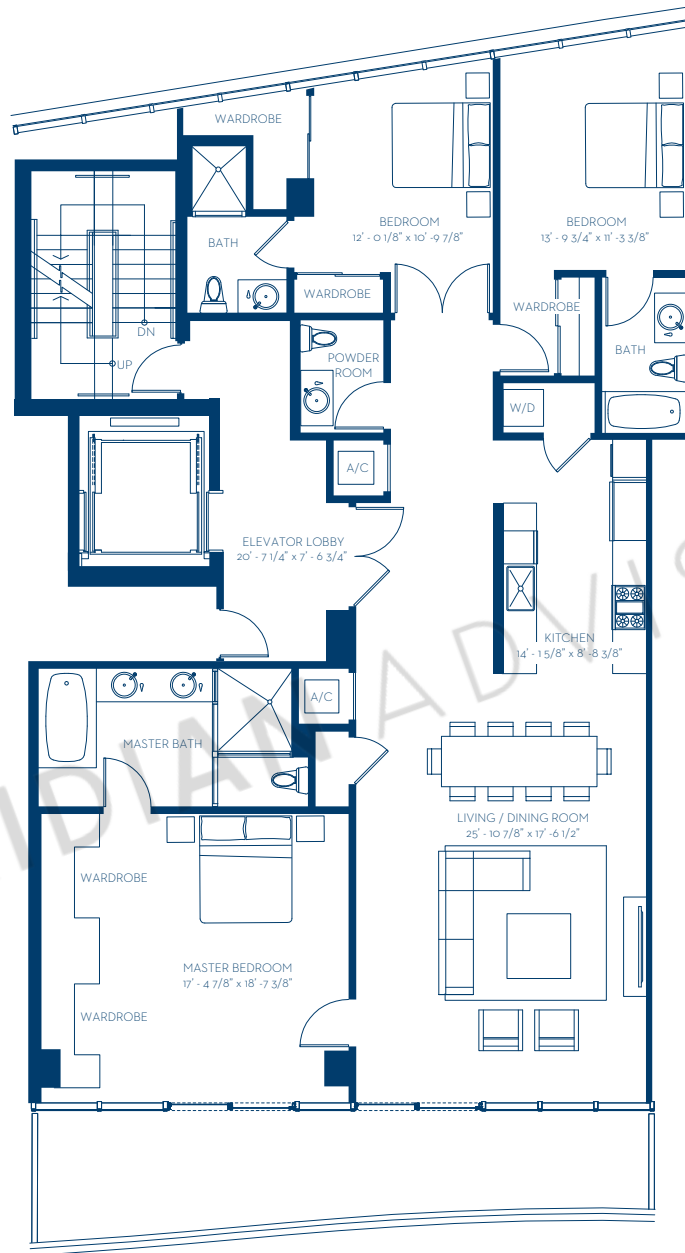


UNIT PH02

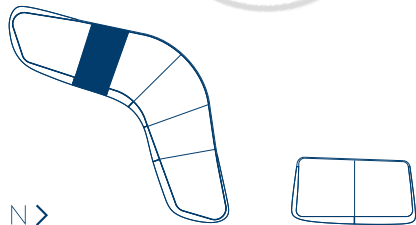
Level 7 / South Building

Residence	2,125 sq ft / 197 sq m
Terrace	255 sq ft / 24 sq m
Rooftop	2,174 sq ft / 202 sq m
Total	4,554 sq ft / 423 sq m

ONE
OCEAN



MERIDIAN ADVISORS



RELATED



Stated dimensions are measured to exterior boundaries of the exterior walls and the centerline of interior demising walls and in fact vary from the dimensions that would be determined by using the description and definition of the "Unit" set forth in the Declaration (which generally only includes the interior airspace between the perimeter walls and excludes interior structural components). For your reference, the area of the Unit, determined in accordance with those defined unit boundaries, is 1,982 sq ft. Note that measurements of rooms set forth on this floor plan are generally taken at the greatest points of each given room (as if the room were a perfect rectangle), without regard for any cutouts. Accordingly, the area of the actual room will typically be smaller than the product obtained by multiplying the stated length times width. All dimensions are approximate and may vary with actual construction, and all the floor plans and development plans are subject to change.

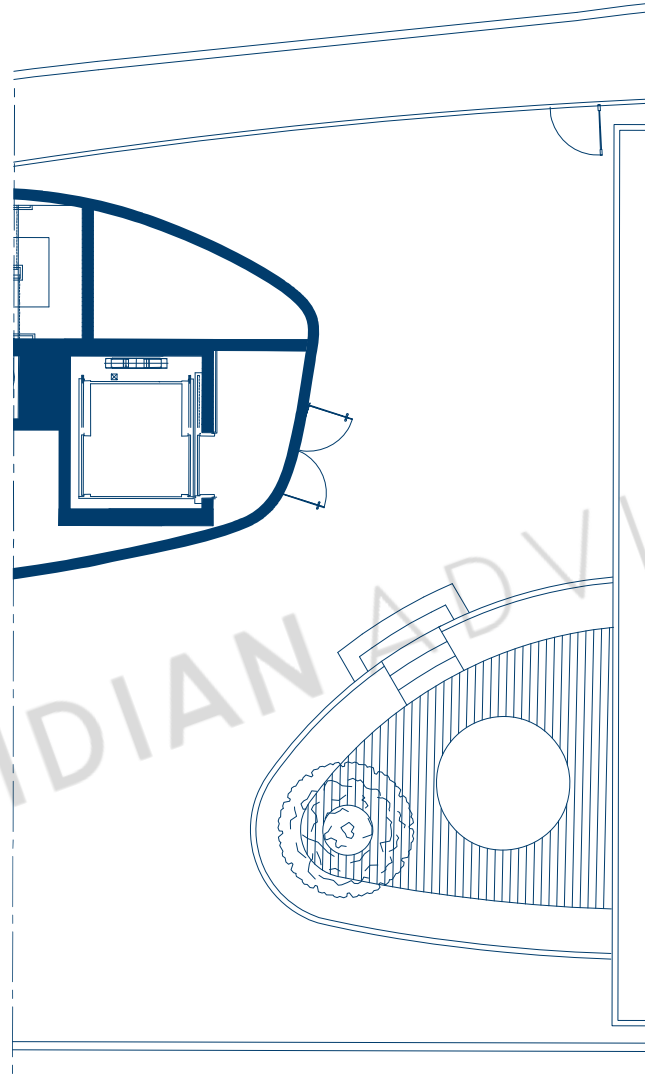
UNIT PH02

Level 8 / South Building / Rooftop Terrace

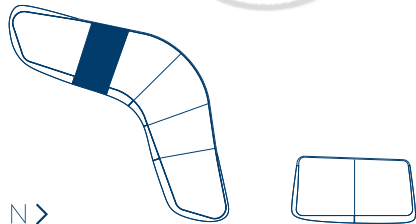
Rooftop 2,174 sq ft / 202 sq m

Total 2,174 sq ft / 202 sq m

ONE
OCEAN



MERIDIAN ADVISORS



N >

RELATED



Stated dimensions are measured to exterior boundaries of the exterior walls and the centerline of interior demising walls and in fact vary from the dimensions that would be determined by using the description and definition of the "Unit" set forth in the Declaration (which generally only includes the interior airspace between the perimeter walls and excludes interior structural components). For your reference, the area of the Unit, determined in accordance with those defined unit boundaries, is 1,982 sq ft. Note that measurements of rooms set forth on this floor plan are generally taken at the greatest points of each given room (as if the room were a perfect rectangle), without regard for any cutouts. Accordingly, the area of the actual room will typically be smaller than the product obtained by multiplying the stated length times width. All dimensions are approximate and may vary with actual construction, and all the floor plans and development plans are subject to change.